

IGC CHALLENGE

2024

<To qualify>

Achieve more than **70** points from October 1st (Sunday), 2023 to January 31st (Wednesday), 2024.

<Reward>

The top 50 qualifiers who achieved more than **70** points will be eligible for travel expenses.

<Travel expenses>

The **150,000 yen travel expense** for each member ID.

* The qualifiers will be required to purchase the IGC ticket to receive the travel expenses.

IGC CHALLENGE

2024

① Enrollment point

Enroll a member from October 2023 through January 2024. (Not applicable for reregistration. Registered in Japan only.)

② ER Retention point

Support members enrolled in October to January to keep their ER.

③ Personal Rank advancement point

Achieving a new rank for the first time during the period.

④ Training point

Train your direct downline to achieve a new rank for the first time from October to January.

IGC CHALLENGE

2024

① Enrollment point

Enroll a member from October through January. (Not applicable for reregistration. Registered in Japan only.)

Enrollment point	PV of the enrolled month
2 P	50~99PV
4 P	100~149PV
6 P	150~199PV
8 P	Over 200PV

- ❖ If your enrollee registered during the IGC Challenge period cancels, the Enrollment, Retention, and Training points you have received will be taken away.
- ❖ Enrollment points can be achieved by enrolling both Brand Partner and Shopping Member.
- ❖ An Enrollment point depends on the amount of PV orders (only in Japan) in the enrolled month.

IGC CHALLENGE

2024

② ER Retention point

By supporting members enrolled from October to January to keep their ER.

ER Retention point	ER purchase
2 P	50~99PV
4 P	100~149PV
6 P	150~199PV
8 P	Over 200PV

- ❖ If your enrollee registered during the IGC Challenge period cancels, the Enrollment, Retention, and Training points you have received will be taken away.
- ❖ A regular order will not be counted for an ER Retention point.
- ❖ The PV point will be calculated based on the products purchased with the monthly ER order.

IGC CHALLENGE 2024

If your enrollee continues the same PV order since the enrolled month, October:

* If your enrollee registered during the IGC Challenge period cancels, the Enrollment, Retention, and Training points you have received will be taken away.

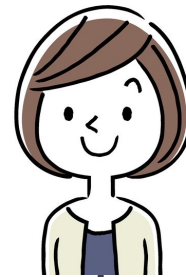
	Oct.	Nov.	Dec.	Jan.	
PV purchased with an ER	Enrolled with an ER	2 nd month ER order	3 rd month ER order	4 th month ER order	4 consecutive month
50~99PV	2P	2P	2P	2P	8P
100~149PV	4P	4P	4P	4P	16P
150~199PV	6P	6P	6P	6P	24P
Over 200PV	8P	8P	8P	8P	32P

↑
Enrollment point

⏟
ER retention point

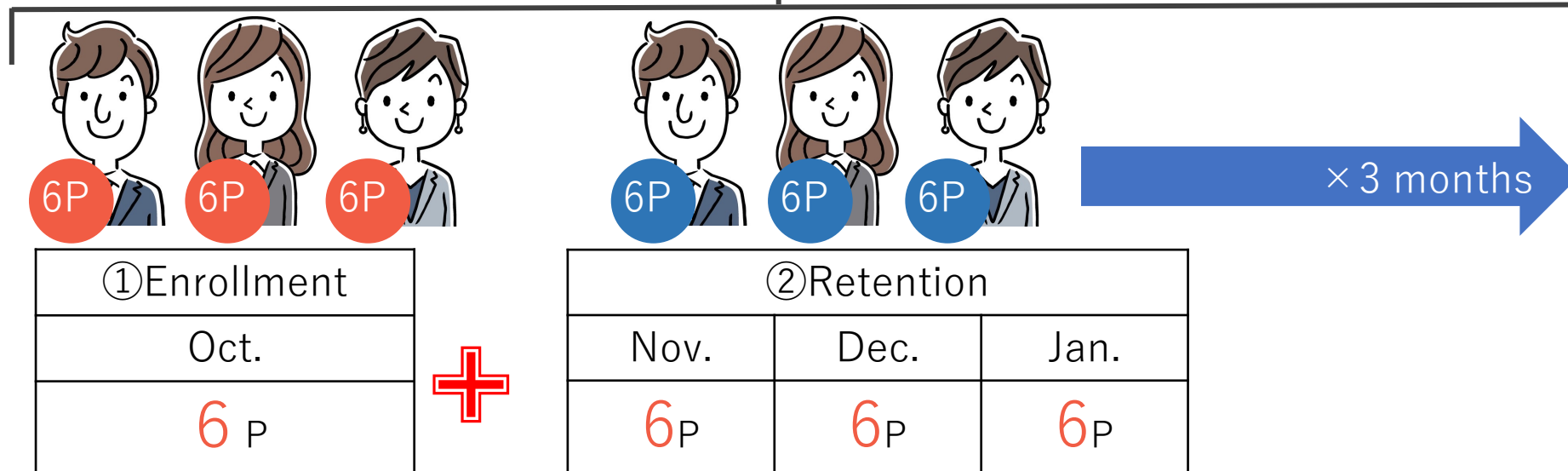
IGC CHALLENGE 2024

Enrolled 3 people with an ER **and** they all continued the 150PV ER order.



Total
72P

24P × 3 enrollees



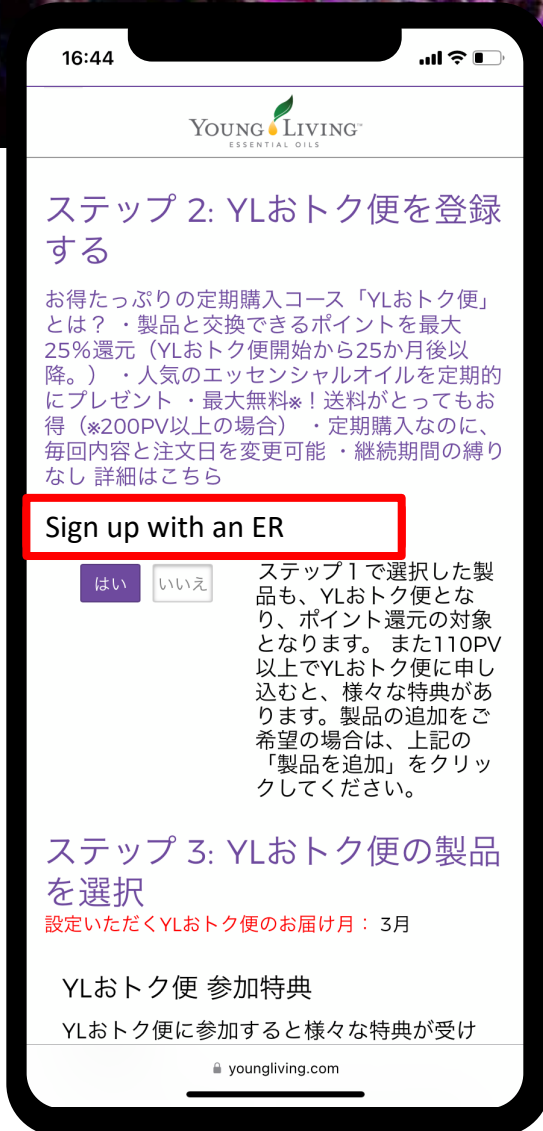
IGC CHALLENGE 2024



The **Retention point** depends on how much PV your enrollee purchased with a monthly ER.

	Oct.	Nov.	Dec.	Jan.	
PV purchased with an ER	Enrolled with an ER	2 nd month ER order	3 rd month ER order	4 th month ER order	4 months total
50~99PV	2P				20P
100~149PV		4P			
150~199PV			6P		
Over 200PV				8P	

↑ Enrollment point
 } ER Retention point



- * The Retention does not include regular orders!!
- * Enrolling with an ER is highly recommended!!

Enroll with 100PV order/ sign up with an ER	2 nd month 100PV ER order	3rd month 100PV ER order
Yes	Continue with an ER	Continue with an ER
Enrollment point: 4P	Retention point: 4P	Retention point: 4P

Enroll with 100PV order/ sign up with an ER	2 nd month 100PV regular order	3rd month 100PV ER order
No	No point for a regular order	Continue with an ER
Enrollment point: 4P	Retention point: None	Retention point: 4P

IGC CHALLENGE 2024



- * The Retention does not include regular orders!!
- * Enrolling with an ER is highly recommended!!

	Oct.	Nov.	Dec.	Jan.	
PV purchased	Enroll with a regular order	2 nd month Regular order	3 rd month Register ER	4 th month Continue ER	7 months total
50~99PV		0 P			18 P
100~149PV	4P				
150~199PV			6P		
Over 200PV				8P	

↑
Enrollment point

⏟
ER retention point

IGC CHALLENGE 2024



* It is important to keep using ER!!

	Oct.	Nov.	Dec.	Jan.	
PV purchased	Enroll with an ER	2 nd month ER continues	3 rd month NO ER	4 th month ER continues	4months total
50~99PV					18 P
100~149PV	4 P	6 P			
150~199PV				8 P	
Over 200PV					
	↑ Enrollment point	↑ ER retention point		↑ ER retention point	

IGC CHALLENGE

2024

③ Personal rank advancement

Point	NEW rank
10	Star
20	Sr. Star
40	Executive
60	Silver
80	Gold
100	Above Platinum

- You will receive a point when you achieve a new rank for the first time.
- No points for the second-time rank advancement or maintaining a rank.
- You will receive each advancement point every time you achieve a new rank for the first time.
- The points for each rank will be added when you achieve 2 higher ranks in the same month.
- You will receive 100 points for each rank achieved from Platinum to Royal Crown Diamond.

IGC CHALLENGE

2024

④ Training

Point	NEW rank
2	Star
5	Sr. Star
20	Executive
30	Silver

- You will receive Training points when your direct enrollee registered in Japan achieves a new rank for the first time.
- No points for the second-time rank advancement or maintaining a rank.
- The points for each rank will be added when your enrollee achieves 2 higher ranks in the same month.
- Training points are only available below Silver.