



VACATION CHALLENGE 2022



YOUNG  LIVING®
ESSENTIAL OILS

MONA FARM

VACATION CHALLENGE 2022

<Outline>

Period: 2022 Mar. 1st - Sept. 30th

Top 50 members who achieved over designated points in Mar-Sept will be eligible for the trip!

<To be qualified you must be:>

- a member registered in Japan
- a brand partner
- an ER user with 100PV or above

The points will be added to your account if you are a brand partner registered in Japan with 100PV or above ER orders.

VACATION CHALLENGE 2022

<Outline>

Period: 2022 Mar. 1st - Sept. 30th

Top 50 members who achieved over **150** points will be eligible for the trip during the period!

<Points>

150
points



- ※Double achiever with 300 points or above will get 2 seats
- ※Triple achiever with 450 points or above will get 3 seats

VACATION CHALLENGE 2022

① Recruitment point

Placing new member in Mar-Sept (※ Reregistration is not eligible to earn the recruitment points.)

② Retention support point

Supporting new members enrolled in Mar-Sept to continue their ER orders

③ Rank up point

Achieving NEW rank in Mar-Sept

④ Nurturing point

Training your direct enroller to hit a new rank in Mar-Sept

⑤ Silver Bound bonus point

Receiving SB bonus in Mar-Sept

VACATION CHALLENGE 2022

① Recruitment point

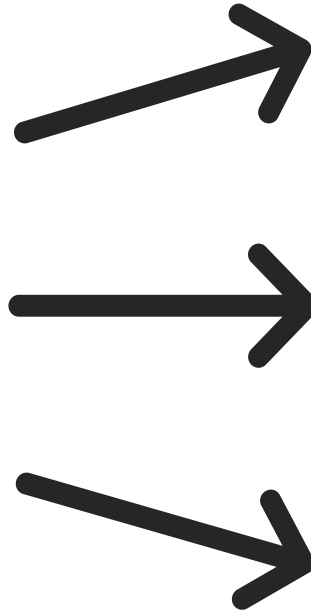
If you place new member in Mar-Sept

(※No reregistration)



You:

- a BP registered in Japan
- have over 100PV ER purchase



150PV or above
New enrollment



100PV~149PV
New enrollment



50PV~99PV
New enrollment



VACATION CHALLENGE 2022

② Retention support point

If you help your direct enroller to continue their ER order in Mar-Sept.



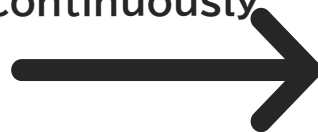
Starting next month after the enrollment until September, only with ER purchase you will receive:



You:

- a BP registered in Japan
- have over 100PV ER purchase

Support them to order continuously



Over 150PV
ER order



100PV~149PV
ER order



50PV~99PV
ER order



VACATION CHALLENGE 2022

② Retention support point

Supporting new members registered in Mar-Sept to continue their ER orders

Only if your direct enrollee places ER order, starting next month after the enrollment until September you will receive:

ER order	Apr ER order	May ER order	Jun ER order	Jul ER order	Aug ER order	Sept ER order	Total points
Over 150PV	5	5	5	5	5	5	30
Over 100PV	3	3	3	3	3	3	18
Over 50PV	1	1	1	1	1	1	6

VACATION CHALLENGE 2022

New enrollment with 150PV ER order + continues 150PV ER orders

Enrolled month	Enrollment points	繼續points						Total
		Apr	May	Jun	Jul	Aug	Sept	
Mar	5	5	5	5	5	5	5	35
Apr	5		5	5	5	5	5	30
May	5			5	5	5	5	25
Jun	5				5	5	5	20
Jul	5					5	5	15
Aug	5						5	10
Sept	5							5

VACATION CHALLENGE 2022

New enrollment with 100PV ER order + continues 100PV ER orders

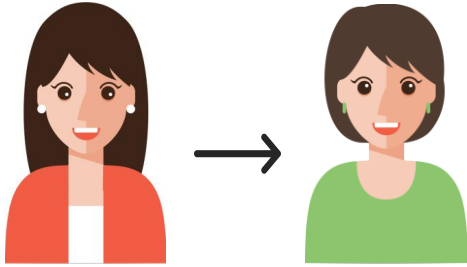
Enrolled month	Enrollment points	繼續points						Total
		Apr	May	Jun	Jul	Aug	Sept	
Mar	3	3	3	3	3	3	3	21
Apr	3		3	3	3	3	3	18
May	3			3	3	3	3	15
Jun	3				3	3	3	12
Jul	3					3	3	9
Aug	3						3	6
Sept	3							3

VACATION CHALLENGE 2022

New enrollment with 50PV ER order + continues 50PV ER orders


Enrolled month	Enrollment point	Retention points						Total
		Apr	May	Jun	Jul	Aug	Sept	
Mar	1	1	1	1	1	1	1	7
Apr	1		1	1	1	1	1	6
May	1			1	1	1	1	5
Jun	1				1	1	1	4
Jul	1					1	1	3
Aug	1						1	2
Sept	1							1

VACATION CHALLENGE 2022



	Mar ER order Enrollment
50~99 PV	
100~149 PV	3
Over 150PV	

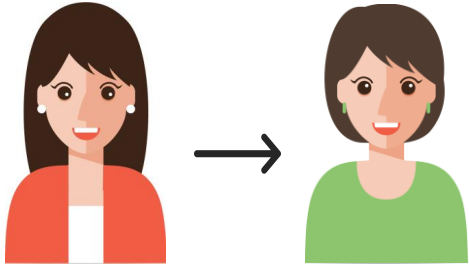


Apr Continue ER	May Continue ER	Jun Continue ER	Jul Continue ER	Aug Continue ER	Sept Continue ER	Total
	1					 23
3		3	3			
				5	5	

Referral points

Retention support point

VACATION CHALLENGE 2022



	Mar ER order Enrollment
50~99 PV	
100~149 PV	3
Over 150 PV	

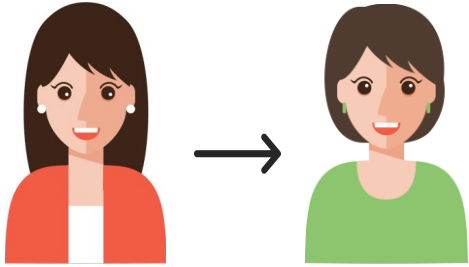
Referral points



Apr Continue ER	May Continue ER	Jun Skip ER	Jul Continue ER	Aug Continue ER	Sept Continue ER	Total
	1					
3			3			20
				5	5	

Retention support point

VACATION CHALLENGE 2022



※Spot order is not included in Support point !!
 ※A key is to use ER order at the time of enrollment!!

	Mar Spot Enrollment
50~99 PV	
100~149 PV	3
Over 150 PV	

Referral points



Apr Spot	May Start ER	Jun Continue ER	Jul Continue ER	Aug Continue ER	Sept Continue ER	Total
Spot						
	Place ER order	3	3			
				5	5	19

Retention support point

VACATION CHALLENGE 2022

③ Rank up point

If **you** achieve NEW rank in Mar-Sept.

You:

- a BP registered in Japan
- have over 100PV ER purchase



NEW Rank	Points
Star	10
Sr. Star	20
Executive	40
Silver	60
Gold	80
Platinum	100
Diamond	120
Crown Diamond	140
Royal Crown Diamond	160

- Points are given when you achieve new rank for the first time.
- No points given for achieving the same rank for the second time or maintaining the rank.
- Any NEW ranks achieved in Mar-Sept will be counted.
- Achieving double rank in the same month= double points for those ranks.

VACATION CHALLENGE 2022

④Nurturing point

Nurture **your direct enrollee!** If they achieve NEW rank in Mar-Sept:

You:

- a BP registered in Japan
- have over 100PV ER purchase



- If your existing direct enrollees achieve NEW rank in Mar-Sept for the first time, you will receive **10** points.
- No points given for achieving the same rank for the second time or maintaining the rank
- All NEW ranks achieved in Mar-Sept are qualified for **10** points.
- Achieving double rank in the same month= **20** points for 2 ranks.
-

NEW Rank	Points
Star	10
Sr. Star	10
Executive	10
Silver	10
Gold	10
Platinum	10

VACATION CHALLENGE 2022

⑤ Silver bound bonus point

If **you** receive SB bonus in Mar-Sept.



You:

- a BP registered in Japan
- have over 100PV ER purchase

- If you receive SB bonus in Mar-Sept, you will get 5 points in the same month you achieved SB bonus.
- Even if you receive SB bonus for 2 ranks or more, you will be eligible for 5 points only.

STAR

2 MONTHS TO HIT STAR*

2 LEGS @ 200 OGV EACH

500 TOTAL OGV

MAINTAIN AND EARN:

\$25

SENIOR STAR

3 MONTHS TO HIT SR. STAR*

2 LEGS @ 500 OGV EACH

2K TOTAL OGV

MAINTAIN AND EARN:

MONTH 1 → \$50
MONTH 2 → \$75
MONTH 3 → \$125

EXECUTIVE

3 MONTHS TO HIT EXECUTIVE*

1 ADDITIONAL LEG @ 500 OGV**

4K TOTAL OGV

MAINTAIN AND EARN:

MONTH 1 → \$100
MONTH 2 → \$150
MONTH 3 → \$250

SILVER

4 MONTHS TO HIT SILVER*

1 ADDITIONAL LEG @ 1K OGV**

10K TOTAL OGV

MAINTAIN AND EARN:

MONTH 1 → \$200
MONTH 2 → \$300
MONTH 3 → \$1,000

*TIME FRAMES MEASURE THE NUMBER OF CALENDAR MONTHS FROM FIRST-TIME QUALIFICATION OF YOUR PREVIOUS RANK.

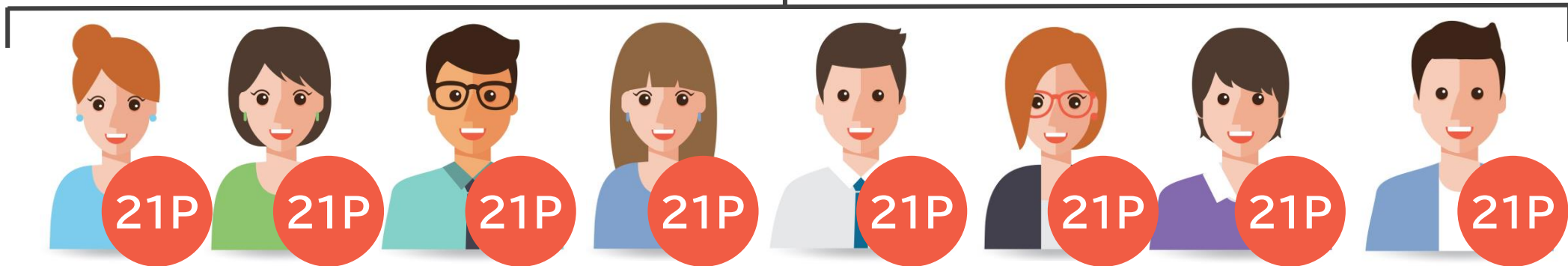
**OUTSIDE OF QUALIFYING LEG REQUIREMENT FOR RANK

†EARNED AFTER TWO MONTHS OF MAINTAINING STAR SILVER BOUND REQUIREMENTS

YOUNG LIVING®

VACATION CHALLENGE 2022

8 new enrollments with 100PV ER orders in Mar. + Everyone continues 100PV ER orders.



① Referral points

Mar

3



② Retention support points

Apr

May

Jun

Jul

Aug

Sept

3

3

3

3

3

3

21P × 8 ppl

VACATION CHALLENGE 2022

2 new enrollments with 100PV ER order every month form Mar-Jul.
+ Everyone continues 100PV ER order



Total
150P

Enrolled: Mar

42P

21P×2



Enrolled: Apr

36P

18P×2



Enrolled: May

30P

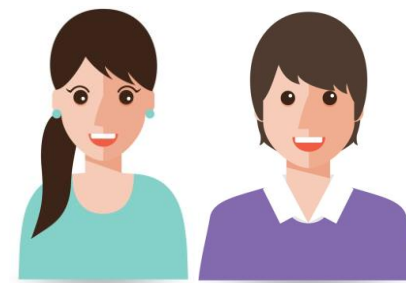
15P×2



Enrolled: Jun

24P

12P×2



Enrolled: Jul

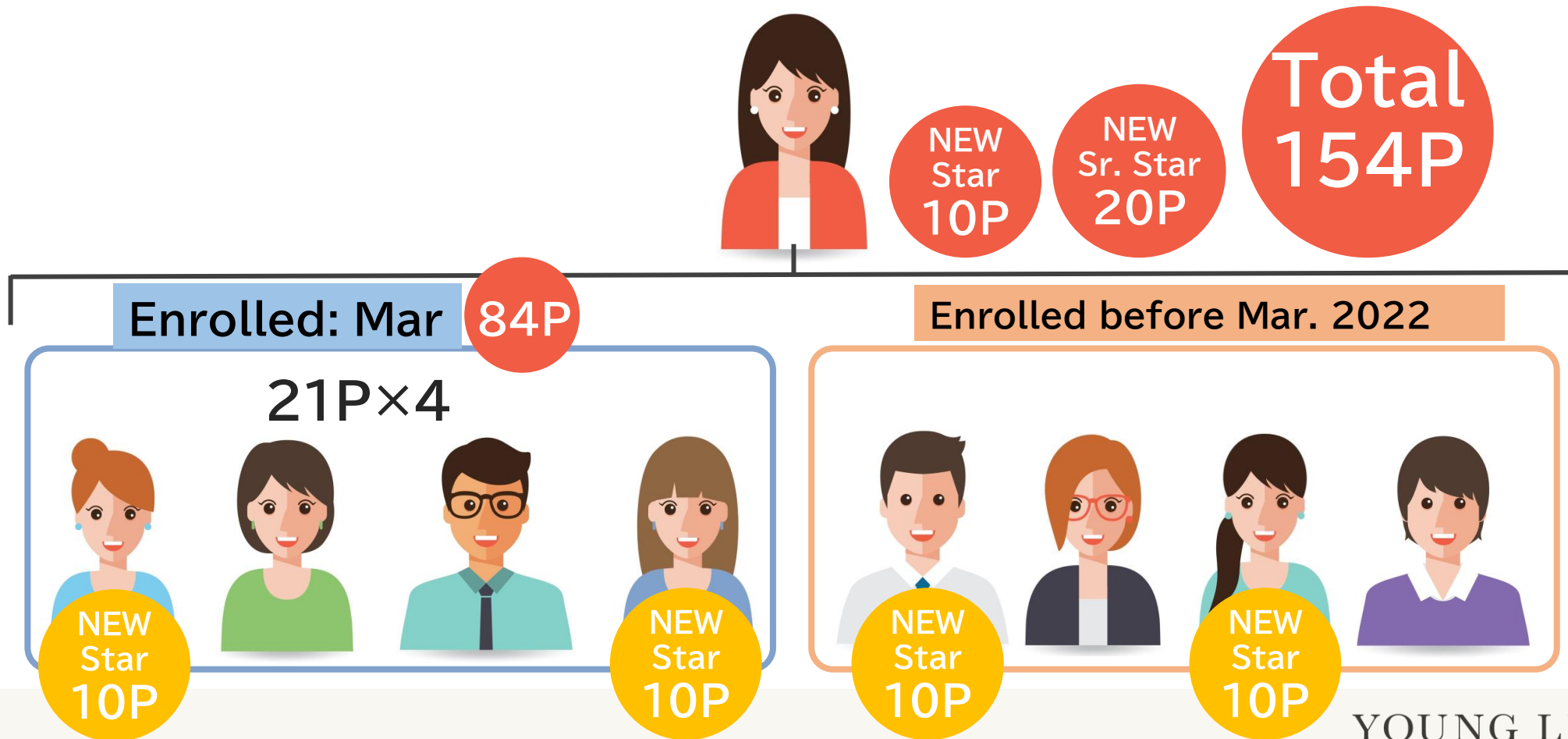
18P

9P×2



VACATION CHALLENGE 2022

- 4 new enrollments with 100PV ER order in Mar. + Everyone continues 100PV ER order
- 4 of your direct enrollees achieve Star for the first time in Mar-Sept
- You have achieved Star and Sr. Star for the first time in Mar-Sept





VACATION CHALLENGE 2022